

A close-up photograph of a Schlage B500 Series deadbolt and lever assembly mounted on a dark-stained wooden door. The deadbolt is positioned above the lever. Both components are finished in a brushed metal, identified as 626 satin chrome. The deadbolt features a circular keyhole with the Schlage logo. The lever is a modern, curved design with a keyhole at its base. The background to the right of the door is a blurred interior scene showing people in a social setting.

B500 Series

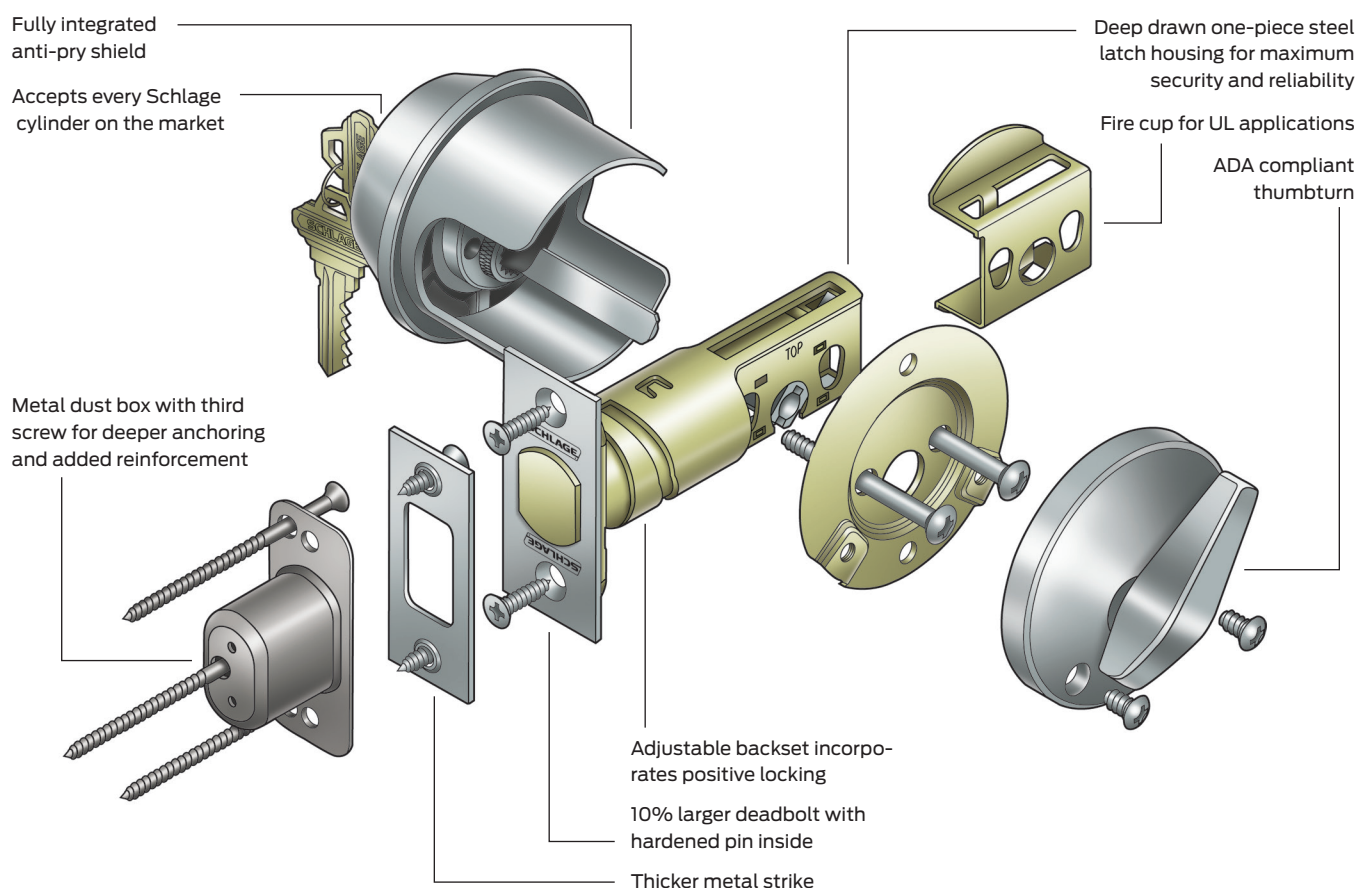
The B500 Series deadbolt is a revolutionary new deadbolt that delivers higher security, tougher performance and the ultimate in installation versatility.

Designed by locksmiths for locksmiths, the B500 Series deadbolt can be fitted with any Schlage cylinder, fits virtually every door you service, enhances lock strength on the jamb side of the door and will change forever the way you look at deadbolts.

Pictured here: B500 (Grade 2) deadbolt with ND Series Athens lever shown in 626 satin chrome

The best deadbolt ever designed by locksmiths

- Adjustable backset with lock-in-place helix design
- Integrated anti-pry shield protects latch
- Thicker metal security strike back-up on jamb side
- Security strike on jamb has third screw for stronger, deeper anchoring
- Added space inside strike box for true deadlatch
- Seamless steel latch construction along the entire length of the bolt housing
- 10% larger diameter deadbolt
- Zinc bolt with spinning hardened steel pin inside
- Tapered front housing that can't be unscrewed
- Integrated trim piece for fewer pieces out of the box
- Large, easy-to-use, ADA compliant thumbturn
- Meets UL 10B and UL 10C requirements



Deadbolt designs

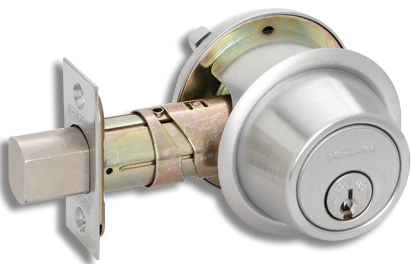
B500 Series

A versatile and economical Grade 2 deadbolt for medium duty commercial and heavy duty residential applications.

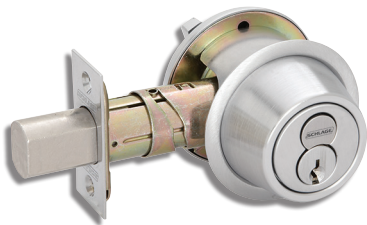
Furnished with conventional cylinder standard.

Available with Primus XP high security cylinder, Primus XP UL437 Listed high security cylinder, full size interchangeable core cylinder, Primus XP interchangeable core cylinder, or small format interchangeable core (SFIC) cylinder.

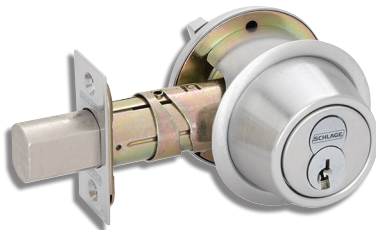
Fits 2 1/8" (54 mm) prep standard and anti-pry shield can be removed to fit 1 1/2" (38 mm) prep. See function charts for required cross bore dimensions.



Design shown in 626 satin chrome plated



Full size interchangeable core



Small format interchangeable core



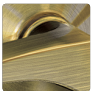










Thumbturn for B500



B500 Series with occupied indicator (B571); 61-509 Emergency key included

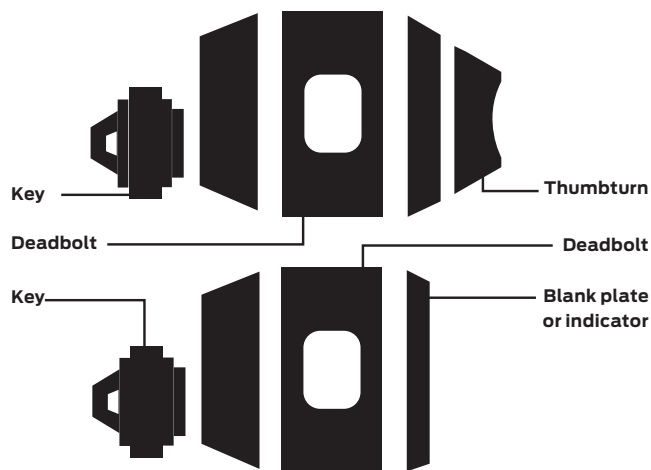
Deadbolt finishes





											
	605 Bright brass	606 Satin brass	609 Antique brass	612 Satin bronze	613 Oil rubbed bronze	619 Satin nickel	622 Matte black	625 Bright chromium plated	626 Satin chromium plated	626AM Anti-microbial coating	643e Aged bronze
Product											
B500

e = an equivalent finish to the BHMA standard.

Deadbolt functions

ANSI A156.36 bored deadbolt locks



-  Standard cylinder.
-  FSIC - full size interchangeable core option.
-  SFIC - small format interchangeable core option.
-  Complies with ADA Accessibility Guidelines.

*Caution:

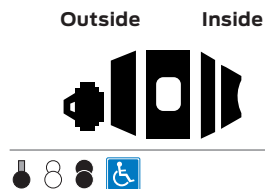
Double cylinder locks on any door are a life safety hazard in times of emergency and their use is not recommended. Installation should be in accordance with existing codes only.

ADA compliant:

Schlage Lock Company offers a wide selection of locks designed to meet the Americans with Disabilities Act.

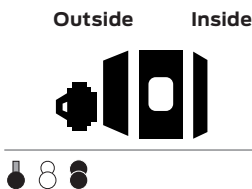
Schlage ANSI B560P E0152 Single cylinder deadbolt

- Deadbolt thrown or retracted by key outside or thumbturn inside



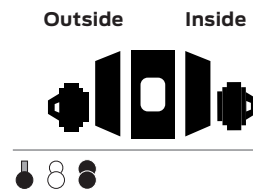
Schlage ANSI B561 E0162 Cylinder only x blank plate deadbolt

- Deadbolt thrown or retracted by key outside
- Blank plate with exposed screws inside



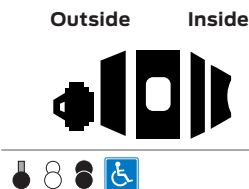
Schlage ANSI B562P* E0142 Double cylinder deadbolt

- Deadbolt thrown or retracted by key either side
- Not UL rated



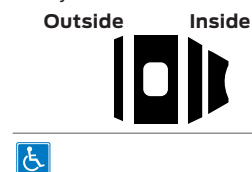
Schlage ANSI B563 E0172 Classroom deadbolt

- Deadbolt thrown or retracted by key outside
- Inside units retracts bolt only



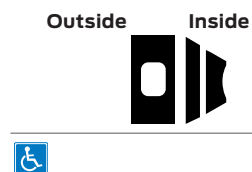
Schlage ANSI B571 - Door bolt occupancy indicator

- Deadbolt thrown or retracted by thumbturn inside
- Outside indicator displays "In use" or "Vacant"
- Requires 1 1/2" cross bore prep
- Not UL rated
- 61-509 Emergency key included



Schlage ANSI B580 E0192 Door bolt

- Deadbolt thrown or retracted by trim unit only
- Requires 1 1/2" cross bore prep



Schlage ANSI B581 E01112 Door bolt with trim

- Deadbolt thrown or retracted by trim unit only
- Blank plate outside
- Requires 1 1/2" cross bore prep

